



## OXLEY PDA PROJECT UPDATE

JULY 2020

### Remediation works

Remediation works and associated vegetation removal has commenced to prepare a clean and safe site for the Oxley community both during and post development of the Oxley PDA area.

These works are progressing on schedule for a September 2020 completion date. The contractor is currently focusing works in the most impacted contamination area central to the site. The schedule to completion is always subject to

the extent of contaminated material found onsite during excavation, as well as favourable weather conditions.

EDQ has commissioned a dedicated environmental scientist onsite overseeing the works and ensuring practices are conducted in accordance with endorsed management plans and legislative requirements.

The EDQ team will continue to keep the community informed of the progress of works.



Central remediation area within Oxley PDA site.

### Remediation works timeline\*

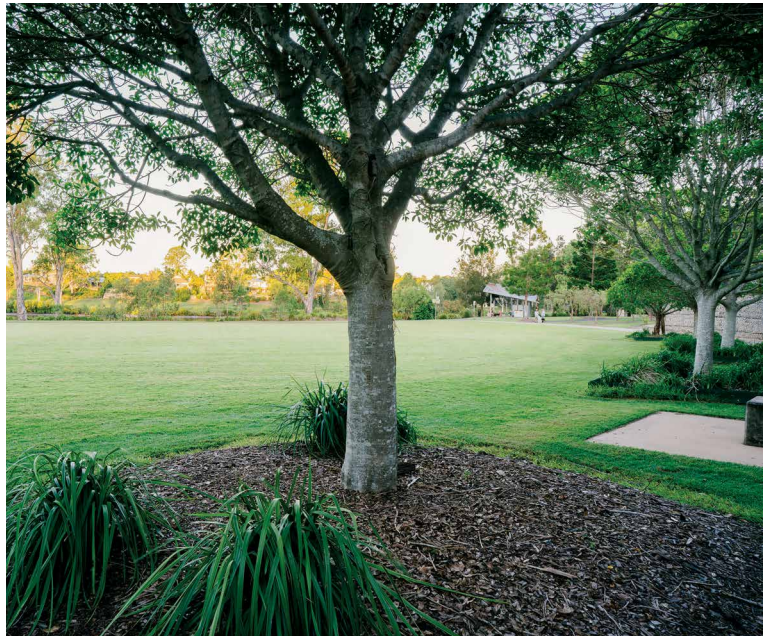
EARLY MAY	Contractor appointment
MID MAY	Site possession
MID MAY	Site establishment
LATE MAY	Central vegetation clearing
EARLY JUNE	Central remediation/exportation
MID JULY	Boundary remediation planned
LATE JULY	Import replacement fill planned
LATE JULY	Vegetation clearing planned end
EARLY AUG	Central remediation planned end
MID AUGUST	Boundary remediation planned end
EARLY SEPT	Import replacement fill planned end

\*indicative timeline



## Contractor appointment

Following an extensive open tender process by EDQ, Shadforth is the successful contractor conducting the remediation and associated vegetation removal works for the Oxley PDA. The tender process included strict evaluation criteria, seeking prior experience of similar remediation works with demonstrated best practice, particularly with regard to Workplace Health and Safety. Shadforth is among Queensland's largest family-owned civil construction companies with over 50 years' experience. Shadforth was awarded the works on 1 May, commenced mobilisation during the week commencing 11 May and commenced works during the week commencing 18 May 2020.





## Safety is the priority

Community safety is the primary purpose of remediation works with a clear focus on strict adherence to work health and safety practices.

The remediation works are necessary to ensure the Oxley PDA site is restored to a safe and clean status. Site decontamination works and associated vegetation removal are required to ensure the safety of the local community regardless of any future development plans.

In accordance with the relevant legislation, regulations and guidelines that govern the management and disposal of asbestos impacted soil, loaded trucks leaving site travel along a 70m rubble haulage route and station themselves at a decontamination station where loads are covered. At this point trucks are cleaned of loose soil and debris and trucks are then inspected by independent third-party environmental scientists to ensure trucks are clean and tarps are fully installed over trailers prior to leaving site. Shadforths construction supervisor is ensuring that trucks leaving site are following the procedures and guidelines required in the independently approved asbestos removal control plans.

Shadforths has advised that any trucks seen travelling along Fort Road and not covered are not carrying any form of asbestos containing materials (ACM).

Asbestos is odourless and cannot be detected by smell. In order to limit any asbestos free fibres being released into the air, Shadforths has implemented strict controls with asbestos monitors at multiple locations around the site. The controls involve a full time person with a high-flow water hose at the face of the excavation (personal protective equipment), ensuring that any suspected asbestos impacted soil is adequately saturated. This standard procedure ensures that no dust or asbestos fibres are released to the environment and remain bound within the wet soil.

Air monitoring and validation samples are submitted to a National Association of Testing Authorities (NATA) accredited laboratory for analysis at all stages



Rubble haulage route

during works. The results of the daily asbestos air monitoring have demonstrated that at no point during the works, have fibre concentrations exceeded the background limits set by the required Guidance Note on the Membrane Filter Method for the Estimation of Airborne Asbestos Fibres, 2nd Edition, 2005 (NOHSC:3003:(2005)).

A Workplace Health and Safety Queensland (WHSQ) representative visited the Oxley PDA site in May and June to inspect the construction management, asbestos management and asbestos control plans, and review Shadforth operational works. The WHSQ officer advised he was satisfied with the safety practices being adhered to onsite. Shadforth and EDQ will continue to engage with the WHSQ officer at regular intervals as remediation works progress.

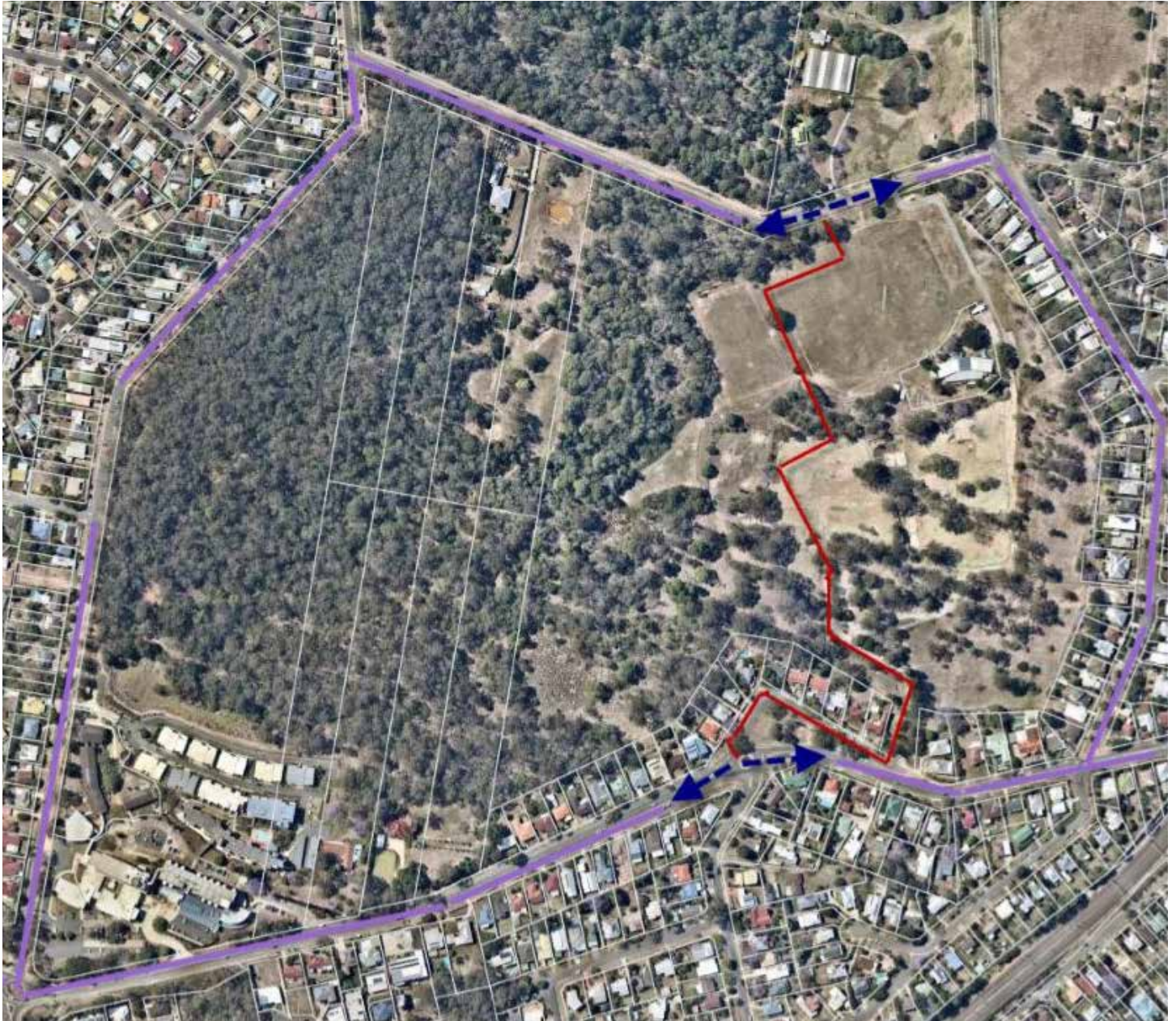
In addition, both Shadforth and EDQ have independently commissioned Workplace Health and Safety (WHS) audits throughout the works with recent onsite inspections confirming extremely high compliance and very positive feedback with regards to the Shadforths management of the site.



Decontamination area for Trucks inspections and clean down only



## Vehicle access points from Seventeen Mile Rocks Road and exit points from Cliveden Avenue and Fort Road to licenced landfill operator.



## Truck movements

As previously advised, heavy vehicle movements are entering through the main entrance at Seventeen Mile Rocks Road and exiting the site via Cliveden Avenue and Fort Road.

In preparation for commencement of works, Shadforth considered the safest and most practical heavy vehicle movement option to transport the contaminated material to a licensed landfill operator. Exiting the Oxley PDA site along the current service road to Seventeen Mile Rocks Road proved challenging due to poor site visibility. The limitations of a minor service road, with tight turning circle and restrictions entering a roundabout for a heavy vehicle fully laden with contaminated material rendered this option unsuitable. Heavy vehicles turning left at the roundabout to take a route over the railway pass and through the Oxley Town Centre was also deemed not suitable due to restrictions on traffic loads. Blackheath

Road was also deemed unsuitable due to its road width and restrictions to light vehicle access only.

The Cliveden Avenue and Fort Road route was assessed as the most practical and safest option for fully laden trucks to exit the site. The trucks using the Cliveden Avenue and Fort Road route are 'truck and dog' trailer combination vehicles which are registered vehicles permitted on Council roads. Truck and dog trailers are travelling within the designated speed limit aided by traffic calming devices. Truck speeds are tracked by GPS to ensure vehicles are operating within designated speed limits.

Frequency of truck movements will vary and are dependent on progress of onsite works. During the most intensive period of works (currently occurring) heavy vehicle frequency will vary with peak numbers of export and import operations up to 120 truck per day.



## Contaminated material

Asbestos monitoring devices were installed prior to works commencing. Steps in managing the removal of asbestos are being undertaken by a WHSQ licensed asbestos removal contractor and overseen by a hygienist and environmental scientist. This team of professionals are onsite ensuring the following measures are implemented and maintained for the duration of the works;

- a 10 metre (where practicable) exclusion zone around in-situ removal areas
- placement of respirable fibre air monitoring pumps to the boundary of the removal area/site. As well as critical areas where specific monitoring is required i.e. C&K Yuingi Community Childcare
- with the use of excavator, load all asbestos impacted material into an Environmental Protection Agency registered vehicle, wet down, cover and transport to a licensed landfill facility for disposal
- visual inspections of excavated material, truck sides and tyres, and load prior to vehicles exiting site
- decontamination of the excavator used to excavate and load out the soil
- trucks utilise an internal haul road over a shake down grid before exiting site with regular street sweepers in operation along exit roads to ensure a clean and safe carriageway for all road users

Removal of sub surface asbestos in close proximity to C&K Yuingi is carefully considered and will be conducted after hours or on weekends. There are currently three air monitoring devices installed on the 2.6 metre shade cloth lined perimeter fencing situated around C&K Yuingi. Shadforth provide regular air monitoring results to C&K representatives with all results deeming no risks to date, and all measurements are in accordance with the "Guidance Note Membrane Filter Method for Estimating Airborne Asbestos Fibres 2nd Edition NOHSC3003-2005".

## Noise

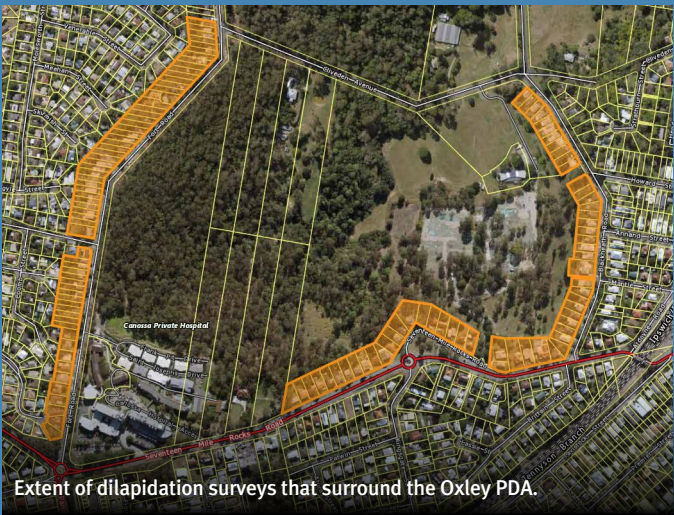
During construction, Shadforth aim to prevent or minimise the impact of noise and vibration on local residents. Noise emissions are managed in accordance with the Australian Standard AS2436, and work hours must comply with the Environmental Protection (Noise) Policy (2008), Queensland Government Noise Advisory Standard (2004) and Local Council bylaws.

Local council requirements advise hours of works between 6.30 am to 5.30 pm Monday to Friday with machines (vehicles) starting at 7.00 am (other than public holidays). This will be varied for occasional works required on a Saturday, between 6.30 am and 12.00 pm (other than Public Holidays) when remediation works are required near C&K Yuingi.

Location	Noise control	Vibration control
Treatment at source	<ul style="list-style-type: none"><li>• Silencing</li><li>• Dampening</li><li>• Servicing or replacement of plant and machinery.</li></ul>	<ul style="list-style-type: none"><li>• Use low-impact methods where possible</li><li>• Sequencing operation</li><li>• Maintain plant and machinery.</li></ul>
Treatment of transmission path	<ul style="list-style-type: none"><li>• Locate plant and machinery away from noise sensitive areas</li><li>• Use bunding, enclosing and screening.</li></ul>	<ul style="list-style-type: none"><li>• Locate plant and machinery away from vibration sensitive areas.</li></ul>
Treatment at the receiver	<ul style="list-style-type: none"><li>• Advise neighbouring communities of expected construction noise.</li></ul>	<ul style="list-style-type: none"><li>• Advise neighbouring communities of expected construction vibrations.</li></ul>

## Dilapidation reports for impacted roads and property owners

Property owners, along Fort Road, Blackheath Road and residents situated along the service road of Seventeen Mile Rocks have been contacted by an independent building inspection contractor to request property access to conduct a dilapidation survey. Surveys of properties that surround the parcel of land at 53 Seventeen Mile Rocks Road, Oxley have been completed and record the current conditions at each property.



Extent of dilapidation surveys that surround the Oxley PDA.





Indicative view from Cliveden Avenue

## Reminder where to direct questions

If you have feedback or comments regarding the current or planned works on the Oxley PDA site please use the Have Your Say site at <https://haveyoursay.dsdmip.qld.gov.au/oxley>. You may leave a question on the Q & A tab or simply click on the email icon at the top of the page. Using the Have Your Say site is the most efficient and effective method to get a response from the EDQ team. We endeavor to respond to all queries in a timely manner.

## Out of hours emergency contact

If there is an emergency on site after hours relating to safety issues, the Shadforth team can be contacted on the below numbers:

Shadforth Construction Manager  
**Michael Pritchard 0490 137 182**

Shadforth Project Manager  
**Campbell Thompson 0476 655 544**

Shadforth Project Foreman  
**Luke Parker 0436 015 825**



## Public submissions closed - what next?

Thank you to all community members who have submitted a response to the development application for the Oxley PDA.

With the submission period now closed, the content of each submission will be considered by EDQ's Assessment Manager in relation to the assessment of the application. This may take some time.

Please note that submitters do not receive a formal copy of the decision notice of a development application. EDQ will provide an update via our Have your Say page <https://haveyoursay.dsdmip.qld.gov.au/oxley> when any decision is formalised.

